



# Prosper

by Seaga

PR2218 | Beverage Merchandiser

The Prosper offers a versatile and convenient solution for vending all types of bottles and cans, providing customers with a seamless shopping experience while maximizing product visibility and variety.



SCAN TO LEARN MORE

ONE SOURCE ALL SOLUTIONS





# Pro\$per

by Seaga

## PR2218 | Beverage Merchandiser

### DURABLE CABINET AND DOOR CONSTRUCTION

Ensuring long-lasting, robust vendor that can withstand everyday wear and tear, providing a reliable and sturdy merchandising solution.

### HIGH CAPACITY DOUBLE COLUMNS

Place your highest demand products here to get double the capacity of any other location in the machine. The high capacity double-columns use first in first out technology.

### EASY CLOSE T-HANDLE LOCK

Equipped with a door locking mechanism that is user friendly and tamper proof.

### LED LIGHTING

Bright, long-lasting illumination while consuming significantly less power than traditional lighting sources.

### HIGH EFFICIENT REFRIGERATION

The high-efficiency R-290 refrigeration system is a cutting-edge technology designed to provide exceptional cooling performance while minimizing energy consumption and environmental impact.



### OPTIONAL MEDIA SCREEN

Show advertisements and promotions to attract customers to buy specific products or take advantage of special offers.

### LED DISPLAY

High-definition, energy-efficient visual screen that produce vibrant, sharp images.

### PREMIUM BILL ACCEPTOR

Efficiently processes various denominations while ensuring accuracy and security.

### CUSTOM GRAPHICS AVAILABLE

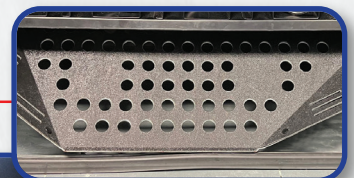
Our designers can create custom visual elements, such as logos, illustrations, or other visual assets, tailored to a specific brand.

Prosper (PR2218) Beverage Merchandiser	
Selections	18 Beverage Selections
Capacity	300 Cans, 240 16.9 Bottles, 200 20 oz Bottles
Selection Pricing	\$0- \$99.95
Payment Systems	Premium Electronic Coin Acceptor, Conlux Bill Acceptor \$1, \$5, \$10 & \$20 (Set for \$1 & \$5)
Electrical Requirements	115 VAC/60Hz, 3.8 AMPS
Dimensions	72" H X 39" W X 34" D
Shipping Weight	877 Lbs.
Standard Features	Live Display, High Cap. Beverage Storage
Options	Custom Graphics, Credit/Debit Card Reader

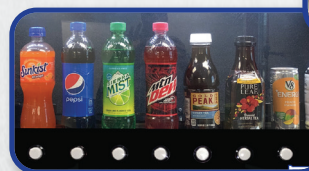


### CASSETTE STYLE REFRIGERATION DECK

### GUARANTEED VEND W/SHOCK SENSORS



### EASY CHANGE PRODUCT DISPLAY



### OPTIONAL MEDIA SCREEN



seaga.com • 815.297.9500 • sales@seaga.com  
700 Seaga Drive, Freeport, IL 61032 USA